



# FIREHOUSE NEWS

**VOL. 3 SPRING 2026**

[www.bifd.org](http://www.bifd.org)

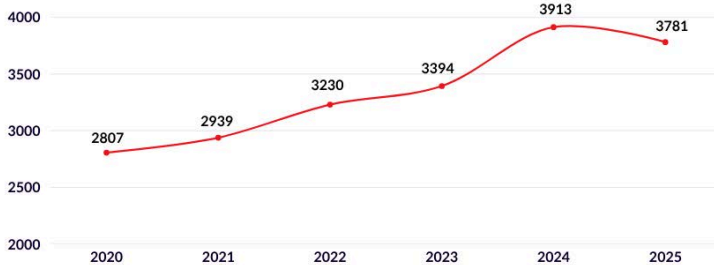
## DEPARTMENT ADOPTS 2026-2028 STRATEGIC PLAN

The Bainbridge Island Fire Department is pleased to present our 2026–2028 Strategic Plan. This plan is the result of many hours of thoughtful collaboration between community members, the Board of Fire Commissioners, and members of our Department. It builds on the success and foresight of our previous strategic plans and helps guide how we will continue serving Bainbridge Island in the years ahead.

Over the past decade our community has experienced a significant increase in the need for emergency services. While we are proud to meet this growing demand, it brings new challenges, including staffing needs, increased wear on apparatus and equipment, and ensuring our responders have the support they need to do their jobs safely and effectively. This Strategic Plan provides important information about our Department—our mission and values, organizational structure, strategic priorities, station locations, apparatus, goals, and key data related to emergency response and finances.

The Board of Fire Commissioners and members of the Department thank you all for your continued engagement and support.

**Calls for Emergency Services  
2020-2025**



Scan the QR code to the right to view the full 2026–2028 Strategic Plan and learn more about how we are working to serve and protect the Bainbridge Island community.



## JOIN US AT AN OPEN HOUSE

Join us at an upcoming Open House where you can meet Fire Chief Moravec and your neighborhood crew!



June 3 from 5:30 - 7:30 PM at Station 21

August 8 from 10 AM - 12 PM at Station 22



September 21 from 5:30 - 7:30 PM at Station 23



# WILL A FIRE TRUCK FIT DOWN YOUR DRIVEWAY?



Emergency vehicles need enough space to reach your home quickly and safely. Take a few simple steps to make sure your driveway is accessible in an emergency:

- **Maintain proper clearance.** Trim brush and tree branches to provide at least **12 feet of width** and **13½ feet of vertical clearance** along your driveway.
- **Remove potential obstacles.** Check for rocks, posts, gates, or other objects that could block or restrict access.
- **Ensure a stable surface.** Your driveway should be **firmly packed and able to support the weight of emergency vehicles**, even during spring when the ground may be soft.
- **Keep turnarounds clear.** If your driveway includes a turnaround area, make sure it is **open and unobstructed** so emergency vehicles can safely maneuver.

Taking a few minutes to prepare your driveway can help first responders reach you faster when it matters most.

## MEGACODE: PREPARING FOR LIFE-SAVING MOMENTS

In January 2026, BIFD partnered with the University of Washington's Medic One Paramedic Training at Harborview to conduct our 22<sup>nd</sup> annual 'Megacode' drill. This drill focuses on cardiac arrest and CPR. These events are among the most common critical incidents that the Department responds to. Ongoing training to ensure our EMTs and Paramedics are ready is a very high priority.

During this drill Paramedic students from the University of Washington team up with experienced BIFD EMTs at Station 21 for realistic scenarios that encompass full emergency response and treatment, team coordination and high-quality CPR, and a complete mock hospital handoff.



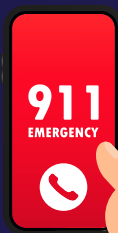
- 112** Responders
- 13** Participating Agencies
- 8** Hours of Hands-On Training
- 32** Realistic Cardiac Arrest Scenarios

## BECOME A LIFESAVER

CPR—cardiopulmonary resuscitation—helps keep blood and oxygen flowing to vital organs during cardiac arrest by manually compressing the heart. When **bystanders start CPR immediately** it significantly improves a patient's chances of survival. That is why we **encourage everyone in our community to learn CPR**. If you'd like to learn or refresh your skills sign up for our free bystander CPR/AED training by scanning the QR code.

### TWO STEPS TO SAVE A LIFE

**1** Call 911

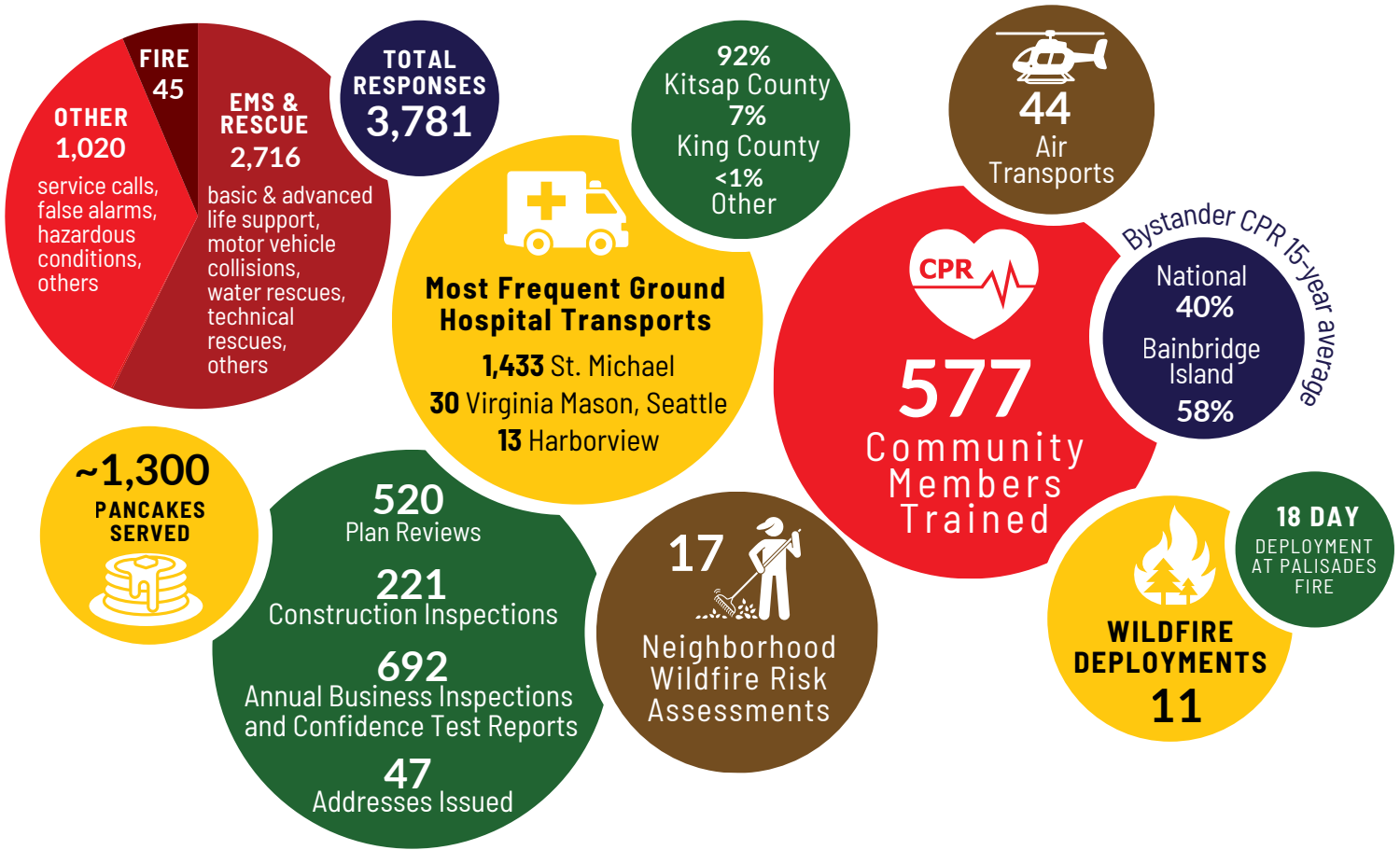


**2** Push hard and fast in the center of the chest



# 2025 BY THE NUMBERS

The Bainbridge Island Fire Department proudly served our community throughout 2025 working every day to safeguard lives, property, and the environment. From emergency response to prevention, training, and community outreach, our team remains committed to keeping our community safe.

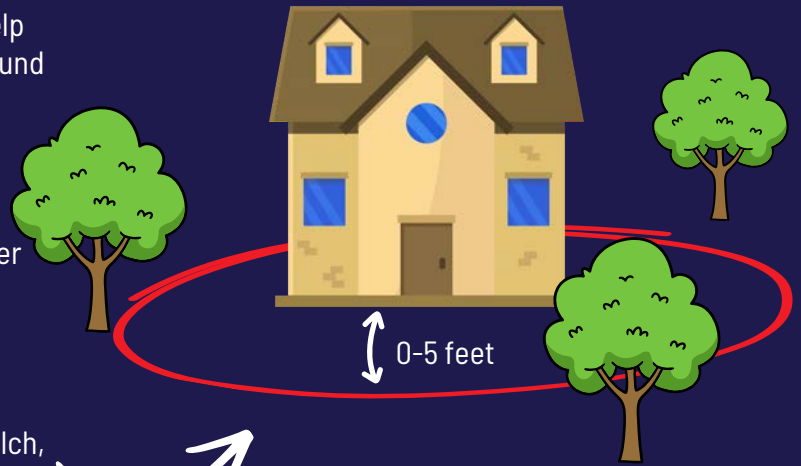


## REDUCE YOUR RISK BY BEING WILDFIRE PREPARED

Wildfire season is approaching and a few simple steps can help protect your home—especially within the critical **0-5 feet** around your house where wind-blown embers can easily ignite materials.

Homeowners can take these key actions:

- **Clean roofs and gutters** of leaves, pine needles, and other debris.
- **Repair or replace** loose or missing shingles or roof tiles.
- **Move flammable materials** away from exterior walls (mulch, firewood, dry vegetation).
- **Clear** items and vegetation from under decks and porches.



These small efforts can significantly reduce wildfire risk and improve your home's safety. For more tips, check the QR code or follow BIFD on social media to stay informed and prepared.





Bainbridge Island Fire Department  
 8895 Madison Ave NE  
 Bainbridge Island, WA 98110

**\*\*ECRWSSDDM\*\***  
 LOCAL POSTAL CUSTOMER

PRSR STD  
 US POSTAGE  
**PAID**  
 SEATTLE, WA  
 PERMIT No. 315

## INSTALLING HANDRAILS SAVES LIVES

Nearly 30% of Bainbridge Island residents are over age 65 and falls are the leading cause of injury-related hospitalizations in Washington State—as well as the most common dispatch call for the fire department. Installing handrails is a simple, proven way to reduce risk.

Take steps to prevent falls at home:

- **Install handrails** on stairs and in key areas inside and outside the home.
- **Check existing railings** for stability and needed repairs.
- **Remove tripping hazards** like clutter and loose rugs.
- **Improve lighting** in walkways and stair areas.



Low- or no-cost handrail installation may be available through Housing Resource Bainbridge's Independent Living at Home program.

Contact Housing Resource Bainbridge (HRB) to get started:

- Call 206-842-1909 ext. 18
- Email [misty@housingresourcebi.org](mailto:misty@housingresourcebi.org)



For additional fall prevention tips and resources, scan the QR code to learn more.

## CONTACT US

[bainbridgeisland  
firedepartment](https://www.facebook.com/bainbridgeislandfiredepartment)

(206) 842-7686

[contact@bifd.org](mailto:contact@bifd.org)

[www.bifd.org](http://www.bifd.org)

[bainbridgeisland  
firedepartment](https://www.instagram.com/bainbridgeislandfiredepartment)

8895 Madison Ave. NE  
Bainbridge Island

## BIFD MEMBERS IN ACTION



*Safeguarding lives, property and the environment through prevention, education and emergency response.*